

### HIGHLIGHTS

- Management system for video distribution networks
- Over-the-air (OTA) in-band control of multiple remote devices
- Integrated with DVB scrambling solutions for secured content delivery
- Regional program switching and blackouts control
- Over-the-Air firmware upgrades
- Facilitates maintenance with device grouping and bulk operations
- Integrated event scheduler enabling automated operation
- State of the art GUI for streamlined control and operation
- Device remote monitoring over return channel (where available)
- Centralized control saves OPEX by avoiding costly site visits

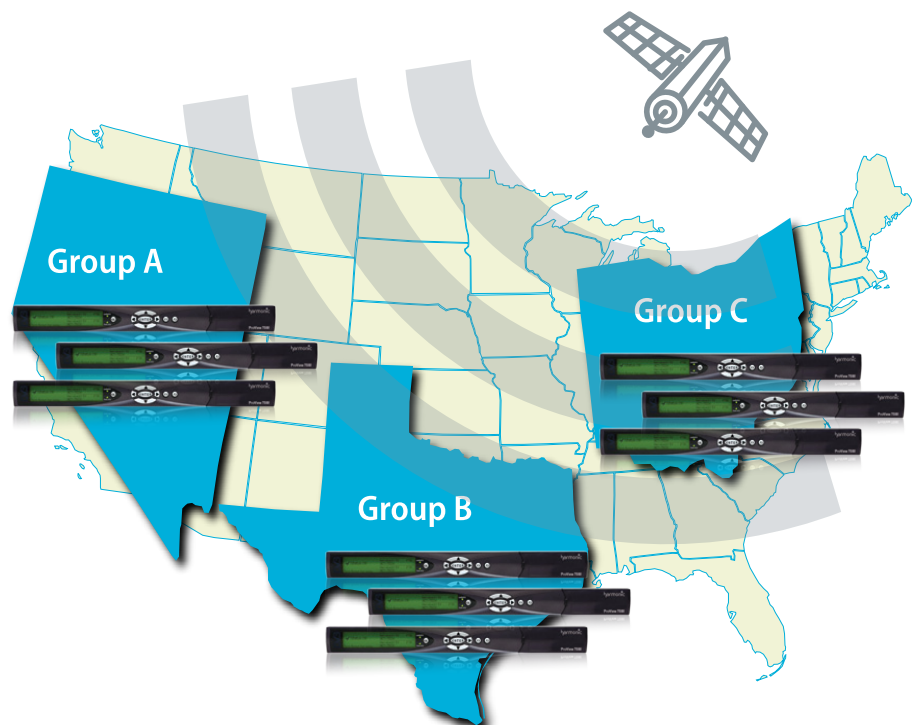
Distribution networks of broadcast content to operators and affiliates usually span across thousands of reception sites, where remote devices are used for reception, decryption and processing. In order to allow secure transmission against unauthorized viewing, apply advanced services such as content localization and regional blackouts and maintain and update the network, a central administration, control and authorization management system is required.

Harmonic's Distribution Management System (DMS) provides broadcasters and content providers with powerful control tools over large device populations. It allows flexible device or group addressability, entitlements and authorization management as well as over-the-air (OTA) in-band control of content distribution network elements such as ProView™ 7000 receivers. The DMS solution is ideal for applications including content distribution to operators, affiliates and service providers, as well as distribution for digital terrestrial TV services.

DMS enables secure broadcast of video content over satellite or IP delivery networks, helping content providers to deliver content to authorized recipients only. Based on open standards such as DVB Simulcrypt, the DMS provides individual or group entitlements control with any DVB compliant CA system. Decryption on the ProView 7000 receivers is based on DVB-CI modules.

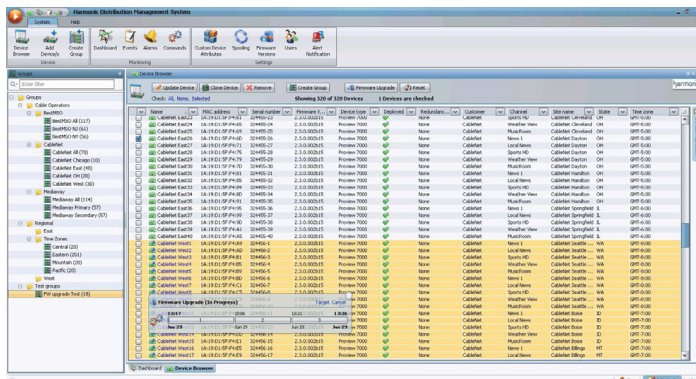
Service providers can lower operating expenditures and eliminate the need for costly remote site visits by managing the video distribution network from a single control system with advanced scheduling, configuration, software upgrade and inventory management capabilities.

Powerful and innovative GUI tools, such as a customizable database and advanced searching, filtering and sorting tools allow easy administration, grouping and addressing of thousands of devices.



### DEVICES ADMINISTRATION AND GROUPING

- Central database manages all device-related information
- Customizable device group attributes
- Device grouping by applying filters on attributes
- Flexible addressability by device or group
- Easy add / remove / edit of single or multiple devices
- Import device information from file



### CONTENT SECURITY

- Open-system interface with all major DVB-simulcrypt CA systems
- DVB-CI compliant descrambling with the ProView 7000
- Subscriber management and CA entitlements per device or groups of devices

### OVER-THE-AIR FIRMWARE UPDATE

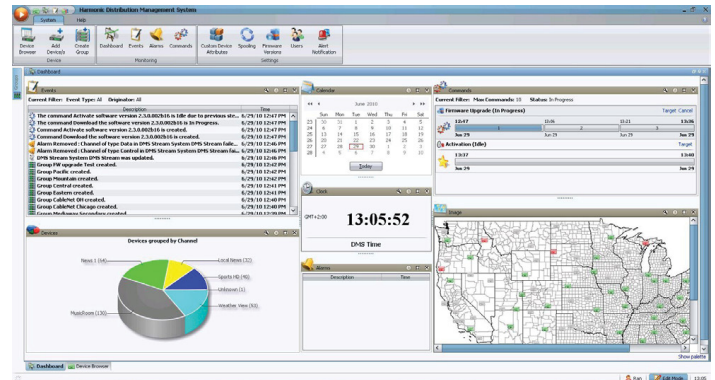
- Firmware upgrade of remote receivers
- Upgrade of a single device, a group or all devices simultaneously

### OVER-THE-AIR DEVICE MANAGEMENT

- Service replacement / Local content
- Regional blackouts
- CA entitlements
- Carrier tuning
- Device license updates

### AUTOMATED OPERATION BY AN EVENT SCHEDULER

- Any operation can be pre-scheduled for delayed execution
- Recurring operations – daily, weekly, monthly schedule
- Full control of command transmission period and activation time
- Active tasks snapshot view



### USER INTERFACE

- State-of-the-art intuitive GUI allows easy control over large device populations
- Advanced navigation, searching and filtering tools
- Customized dashboard view for system monitoring

### SYSTEM CONTROL AND ACCESS

- Client-server architecture allows management from remote clients
- Multiple user levels for controlled system access
- Automatic or manual database backup

### DIAGNOSTIC TOOLS AND AUDITING / REPORTING

- System alarms view with sort / filter support
- Event log records every transaction in the system
- User activity log for all users
- Command history per group/device
- System generated audio-visual alerts
- Custom reports

### DEVICE SUPPORT

- ProView 7000



### DEVICES ADMINISTRATION AND GROUPING

Software editions available: Enterprise, Standard

Feature	Enterprise	Standard
Device database and grouping	√	√
Firmware update	√	√
Device reset	√	√
Preset configuration download	√	0
CA subscriber management	0	0
Device license update	√	√
Device control	√	
Command scheduler	√	

√ = Included 0 = Optional

### SOFTWARE OPTIONS (LICENSE ENABLED)

Feature	Description
CA subscriber and entitlements management	Subscriber and entitlements management for Conditional Access (with SMS Interface to CA system)
Preset configuration download	OTA download and activation of preset configuration files to devices
Additional client	Software client for DMS remote management

### SERVER HARDWARE

Platform	Dell R610
CPU	Xeon 5650 six core
Memory	4GB DDR3
HDD	2 X SAS (15k RPM) 73GB – Mirrored 3 X SAS (15k RPM) 73GB – RAID 5
Dual PSU	

### ENVIRONMENTAL

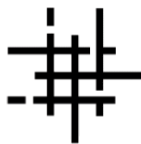
Operating Temperature	50° to 95°F 10° to 35°C
Storage Temperature	-40° to 149°F -40° to 65°C
Operating Humidity	20% to 80% (non-condensing)
Power Consumption	717 Watts
Max Heat Dissipation	2446.5 BTU per hour

### PHYSICAL

Dimensions (W x H x D)	18.99 in x 1.68 in x 30.39 in
Includes rack latches, PSU handles and bezel	48.24 cm x 4.26 cm x 77.2 cm
Weight	39 lbs 17.69 kgs



[www.proharmonic.com](http://www.proharmonic.com)  
sales@proharmonicinc.com



[www.DigitalGlue.com](http://www.DigitalGlue.com)  
sales@digitalglue.com

This Datasheet was provided by proHarmonicInc, a division of DigitalGlue. DigitalGlue is an official partner of Harmonic, Inc. 30100 Town Center Drive, Suite O-444 Laguna Niguel, CA 92677 USA ph: 949.388.9078 fax: 949.606.8176

[www.harmonicinc.com](http://www.harmonicinc.com)

© 2013 Harmonic Inc. All rights reserved. Harmonic, the Harmonic logo, Electra and Ion are trademarks, registered trademarks or service marks of Harmonic Inc. in the United States and other countries. Dolby, Dolby Digital, Dolby Digital Plus and Dolby E are registered trademarks of Dolby Laboratories. Implementations of AAC/HE AAC by Fraunhofer IIS. Other company, product and service names mentioned herein may be trademarks or service marks of their respective owners. All product and application features and specifications are subject to change at Harmonic's sole discretion at any time and without notice. 02.04.13

