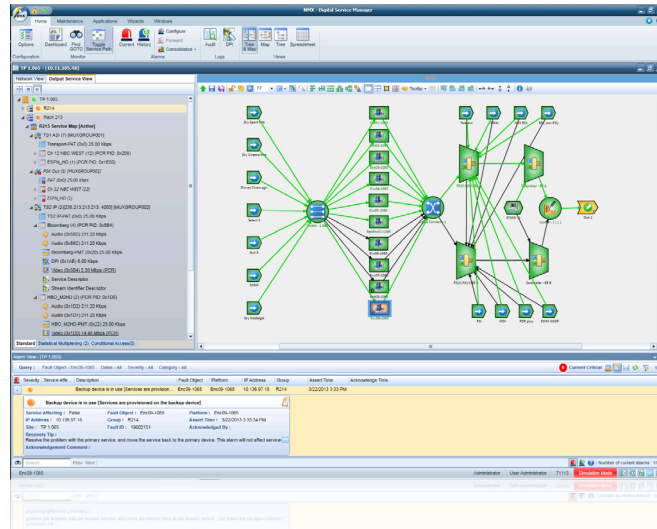


### HIGHLIGHTS

- Service-oriented to work the way operators work
- “Input to output” GUI and functionality
- Template and wizard-based system setup
- Scalable to any size system
- Centralized management of geographically distributed systems
- Distributed processing for high availability
- Flexible redundancy
- Easy lineup changes using any-to-any technology
- Powerful automation interface
- Internal EIS
- Internal DPI server supports SCTE standard digital program insertion cue message injection
- User administration/security/audit trail tools
- Extensible third-party device monitoring using GPI closures and SNMP
- Historical and statistical analysis of bandwidth and alarm behaviors
- Advanced automation and scheduling engine



Harmonic’s NMX™ Digital Service Manager is the definitive video network management solution, encompassing a powerful set of tools for monitoring and managing compressed digital video and audio services, as well as the systems through which these services flow. It allows operators to run their technical infrastructure in a way that parallels their business—as a series of revenue-generating workflows rather than as a set of discrete hardware components.

NMX offers a simple and intuitive interface for creating and modifying channel lineups. It can also be used to set system parameters, whether encoding or rate-shaping; in this instance, the underlying equipment is automatically reconfigured to accommodate the new settings. Status for services and hardware, including alarms, is passed through to the top level, ensuring that problems are quickly detected and resolved. Redundancy is automated.

Adding, reconfiguring or removing services or equipment is fast, easy and error-free with NMX. Templating, wizards, consolidated data views and powerful cut-and-paste functions are available for both service and system modifications.

With the addition of Harmonic any-to-any technology, NMX allows users to easily modify and deploy new channel lineups on the fly with minimal disruption. A new three-pane layout affords the operator an easier overview into their service paths through the network elements.

NMX is designed for 24x7 operations and can run on a single computer or be distributed across multiple servers for maximum availability. Service and configuration data are stored in a reliable, industrial-strength database. NMX provides multi-level security, ensuring full control of operational privileges. In addition, a comprehensive audit trail and consolidated alarm log pinpoint hardware or operational problems.

NMX is highly scalable and extensible, growing in tandem with the environment it supports. The client/server architecture supports both the centralized management of even the most geographically distributed environments, as well as the remote management of a centralized environment, all using standard TCP/IP LAN/WAN technologies. The use of standards-based interfaces enables NMX to interconnect with other subsystems, including Conditional Access, automation and scheduling. As the managed environment grows in scope and scale, NMX can distribute its processes across multiple PC platforms, as necessary, providing inexpensive raw processing power.

Moreover, through historical analysis, NMX offers detailed reporting of bandwidth usage and alarm behaviors, allowing operators to identify system-wide trends and improve overall network stability.



## FEATURE SUMMARY

Network Control & Provisioning
Redundancy Support (1:1, N:1, N:M)
Basic Alarm Package (Pending alarms, history alarms, status colors on icons)
PSI/SI Package (PSI/SI table support, private descriptors)
CAS Package
Advanced Alarm Package (Advanced alarm configuration, alarm forwarding, consolidated alarm viewer)
Security Management Package (Full user administration tools, audit trail)
Automation Server Package (Access the automation server and scheduling engine)
Statistics Package (VOD utilization statistics, alarm statistics, inventory reports)
Distributed Management Package (Monitoring and control of geographically distributed systems)
NMX PC Fail-Safe Package (NMX 1:1 redundancy, auto-restart)
Maximum number of clients: 25

## APPLICATIONS

Satellite
Centralized or distributed cable
VOD
Multiscreen
Terrestrial
Telco
Network distribution
Backhaul
Network PVR

## USER-FRIENDLY

Templates at device and system level
Cut, copy and paste functions
Wizard-based setup
Batch-driven automation tools
Spreadsheet toolUser-friendly
Templates at device and system level
Cut, copy and paste functions
Wizard-based setup
Batch-driven automation tools
Spreadsheet tool

## SERVICE MANAGEMENT

Simple template-based service setup
Extraction of service information
Service level or PID level manipulation
Service tracking across topology
Dynamic PSI/SI table generation
Completely flexible private descriptor generation
Virtual service management
Service-oriented alarms and analysis
Program suspend/resume

## TOPOLOGY MANAGEMENT

Graphical view of network and devices
Geographical background maps
Multi-level maps
Component backplane views
Cut, copy and paste replication
Template-based topologies
Online and offline operation

## CONFIGURATION MANAGEMENT

Device, module and port-level configuration
Consolidated views for easy setup
Template-based configuration

## FAULT MANAGEMENT

Manual or automatic redundancy switching
Router-based, path-based or IP-based redundancy mechanisms
GPI (contact closure) device monitoring tool
SNMP-based monitoring of third-party hardware
Alarm configuration
Monitoring and alarm logging, highlights affected services and hardware
Standard PERL scripting tool for automatic emails, pages or SMS messaging on fault conditions
SNMP-based alarm forwarding agent with alarm filtering



## SECURITY MANAGEMENT

Full user administration tools for multi-user environments

---

Multi-level access privilege

---

Access can be geographically limited

---

Lockouts to manage secure modifications in multi-user operations

---

Comprehensive audit trail

---

## TABLE SUPPORT

MPEG-2, DVB, ATSC compliant

---

PSI/SI generation

---

Flexible descriptor generation

---

Accepts PSI/SI from external sources

---

## CONDITIONAL ACCESS SUPPORT

DVB Simulcrypt V3

---

OpenCAS

---

AES

---

Full CAS redundancy support

---

Internal EIS

---

## TRAFFIC/AUTOMATION/EIS INTERFACES

Advanced scheduler with timeline user interface

---

Easy external triggering of user-defined service/configuration states

---

DVB EIS-Muxconfig support

---

DVB SIMPCOMP-MUXNOTIFY support

---

Internal EIS

---

Full XML-based service API

---

Internal DPI server supports SCTE standard DPI cue message injection

---

## SOFTWARE MANAGEMENT

Storage and distribution of software for easy update across distributed networks

---

Background download

---

## NMX FAIL-SAFE MANAGEMENT

Automatic 1:1 NMX server redundancy

---

Auto-restart capability

---

## MONITORING SOLUTIONS

Integrated with multiple monitoring solution vendors for an integrated headend

---

Real-time correlation with multiple MPEG-2 analyzers

---

Control and integration with a wide array of decoders

---

## STATISTICAL ANALYSIS

Statistical analysis of bandwidth utilization for VOD systems

---

Statistical analysis of alarm behavior

---

Inventory and device status reports

---

## STANDARDS-BASED

SNMP

---

XML

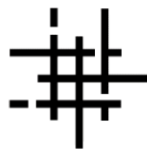
---

TCP/IP

---



[www.proharmonic.com](http://www.proharmonic.com)  
sales@proharmonicinc.com



[www.DigitalGlue.com](http://www.DigitalGlue.com)  
sales@digitalglue.com

This Datasheet was provided by proHarmonicInc, a division of DigitalGlue. DigitalGlue is an official partner of Harmonic, Inc. 30100 Town Center Drive, Suite O-444 Laguna Niguel, CA 92677 USA ph: 949.388.9078 fax: 949.606.8176

© 2013 Harmonic Inc. All rights reserved. Harmonic and the Harmonic logo are trademarks, registered trademarks or service marks of Harmonic Inc. in the United States and other countries. Other company, product and service names mentioned herein may be trademarks or service marks of their respective owners. All product and application features and specifications are subject to change at the sole discretion of Harmonic at any time and without notice.  
03.29.13

