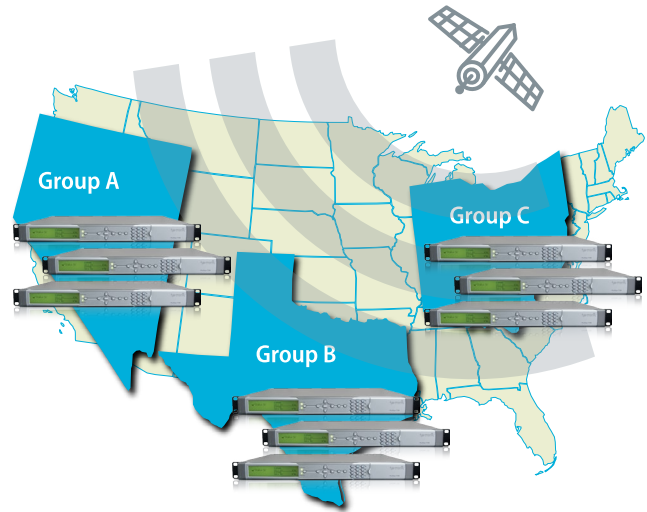


DMS™

VIDEO DISTRIBUTION MANAGEMENT SYSTEM



Video distribution networks of broadcast content to operators and affiliates can touch thousands of reception sites, where remote devices are used for reception, decryption and processing. To allow secure transmission against unauthorized viewing, apply advanced services such as content localization and regional blackouts, and maintain and update the network, a central administration, control and authorization management system is required.

Harmonic's DMS™ video distribution management system provides broadcasters and content providers with powerful control tools over large populations of integrated receiver-decoders (IRDs). It allows flexible device or group addressability, entitlements and authorization management, as well as over-the-air (OTA) in-band control of Harmonic ProView™ 7100 and 8100 IRDs. The DMS solution is ideal for applications including content distribution to operators, affiliates and service providers, as well as distribution for digital terrestrial TV services.

DMS enables secure broadcast of video content over satellite or IP delivery networks, helping content providers to deliver content to authorized recipients only. Based on open standards such as DVB Simulcrypt, the DMS provides individual or group entitlement control with any DVB-compliant CA system. Decryption on ProView 7100 and ProView 8100 receivers is based on DVB-CI modules.

Service providers can lower operating expenditures and eliminate the need for costly remote site visits by managing the video distribution network from a single control system with advanced scheduling, configuration, software upgrade and inventory management capabilities.

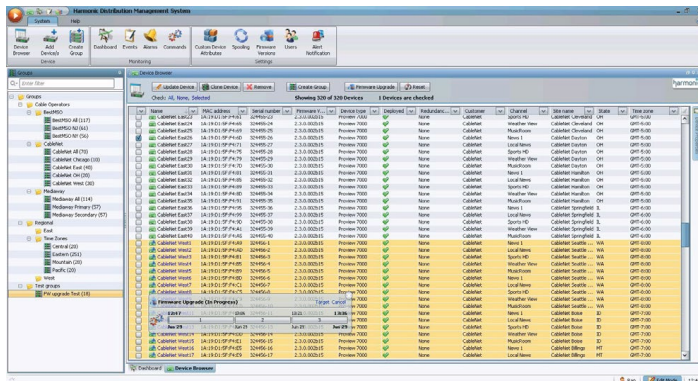
Powerful and innovative GUI tools, such as a customizable database and advanced searching, filtering and sorting tools, allow easy administration, grouping and addressing of thousands of devices.

HIGHLIGHTS

- Management system for video distribution networks
- Over-the-air (OTA) in-band control of multiple remote devices
- Integrated with DVB scrambling solutions for secured content delivery
- Regional program switching and blackout control
- OTA firmware upgrades
- Facilitates maintenance with device grouping and bulk operations
- Integrated event scheduler enables automated operation
- State-of-the-art GUI for streamlined control and operation
- Remote device monitoring over return channel (where available)
- Centralized control saves OPEX by avoiding costly site visits

Devices administration and grouping

- Central database manages all device-related information
- Customizable device group attributes
- Device grouping by applying filters on attributes
- Flexible addressability by device or group
- Easy add / remove / edit of single or multiple devices
- Import device information from file



Content Security

- Open-system interface with all major DVB-simulcrypt CA systems
- DVB-CI compliant descrambling with the ProView 7100 or 8100 IRD
- Subscriber management and CA entitlements per device or groups of devices

Over-the-air firmware update

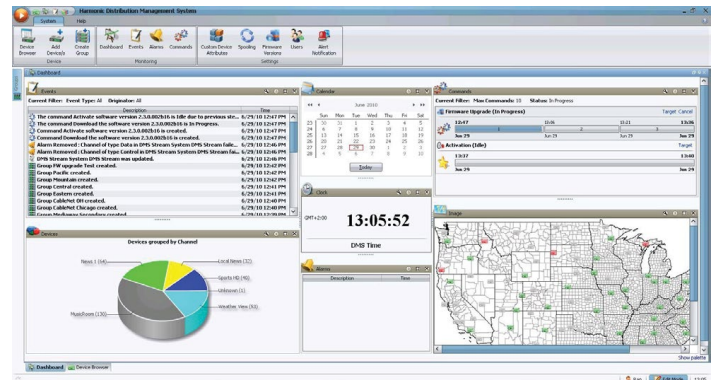
- Firmware upgrade of remote receivers
- Upgrade of a single device, a group or all devices simultaneously

Over-the-air device management

- Service replacement / Local content
- Regional blackouts
- CA entitlements
- Carrier tuning
- Device license updates

Automated operation by an event scheduler

- Any operation can be pre-scheduled for delayed execution
- Recurring operations – daily, weekly, monthly schedule
- Full control of command transmission period and activation time
- Active tasks snapshot view



User Interface

- State-of-the-art intuitive GUI allows easy control over large device populations
- Advanced navigation, searching and filtering tools
- Customized dashboard view for system monitoring

System control and access

- Client-server architecture allows management from remote clients
- Multiple user levels for controlled system access
- Automatic or manual database backup

Diagnostic tools and Auditing / Reporting

- System alarms view with sort / filter support
- Event log records every transaction in the system
- User activity log for all users
- Command history per group/device
- System generated audio-visual alerts
- Custom reports

Device Support

- ProView 7100 IRD, Transcoder and Stream Processor
- ProView 8100 Commercial IRD

SPECIFICATIONS

DEVICES ADMINISTRATION AND GROUPING

Software editions available: Enterprise, Standard

Feature	Enterprise	Standard
Device database and grouping	✓	✓
Firmware update	✓	✓
Device reset	✓	✓
Preset configuration download	✓	0
CA subscriber management	0	0
Device license update	✓	✓
Device control	✓	
Command scheduler	✓	

✓ = Included 0 = Optional

SOFTWARE OPTIONS (LICENSE ENABLED)

Feature	Description
CA subscriber and entitlements management	Four ASI inputs + four ASI outputs, bypass, required for single/dual/triple/quad ASI switch
Preset configuration download	OTA download and activation of preset configuration files to devices
Additional client	Additional client

SERVER HARDWARE

Platform	1.7 in x 17.5 in x 19.8 in (1 RU) 4.3 cm x 44.5 cm x 50.2 cm
CPU	Xeon 5650 six core
Memory	4GB DDR3
HDD	2 X SAS (15k RPM) 73GB – Mirrored 3 X SAS (15k RPM) 73GB – RAID 5
Input Frequency	50-60 Hz
Power Consumption	Up to 80 W
Dual PSU	

ENVIRONMENTAL

Operating Temperature	50° to 95°F 10° to 35°C
Storage Temperature	-40° to 149°F -40° to 65°C
Operating Humidity	20% to 80% (non-condensing)
Power Consumption	717 Watts
Max Heat Dissipation	2446.5 BTU per hour

PHYSICAL

Dimensions (W x H x D)	18.99 in x 1.68 in x 30.39 in 48.24 cm x 4.26 cm x 77.2 cm
Weight	39 lbs 17.69 kgs

DigitalGlue



www.digitalglue.com
sales@digitalglue.com
 877.822.4683